



SANTA FE SCHOOL FOR THE
ARTS & SCIENCES

MIDDLE SCHOOL AT ARTS & SCIENCES

Inspired Teaching | Engaged Learning | Safety & Sanctuary

"In this school, the goal is not only to teach numbers and words, but to teach tolerance, respect, and compassion, helping each student grow up to be a happy, well-rounded citizen... I was never scared to be who I was."

- Arts & Sciences Alumnus



The Only Expeditionary Learning School in New Mexico

We are committed to learning that is meaningful. Students think critically, work collaboratively and apply their skills and knowledge to real world issues and problems to make a positive change in their communities. We connect high quality academic learning to adventure and character development, using a hands-on, project-based approach that integrates the arts and sciences.

Inspired Teaching & Engaged Learning

Our experienced teachers nurture the individual qualities and strengths of each student, making learning engaging, maintaining high expectations and developing connections that last beyond the middle school years.

Sanctuary School

Students and teachers work together to create and cultivate an inclusive environment, celebrating diversity and allowing students to find their own voice. Our students develop skills that are essential for navigating the dynamic time of adolescence.

ABOUT US

We are a small private school, on the south side off Jaguar Drive, with 140 students. Our 5-acre campus affords lots of outdoor space for outdoor learning. Our Middle School has 48 students total - 24 for 7th and 24 for 8th. Our graduates go on to succeed at a wide range of public and private high schools, including New Mexico School for the Arts, Santa Fe Prep, Santa Fe High and The Masters Program.

We do our absolute best to keep our tuition affordable, and financial aid is available. Current Middle School tuition is \$14,369, and over 30% of our students receive tuition assistance.

Admissions Dates:

Middle School In-Person Open House: Saturday, October 21, 2023 – 4:30 to 6:30pm

Early Admissions Application Deadline: November 17, 2023

Regular Admissions Application Deadline: February 16, 2024

Visit the Middle School Program section of our website for more information on our culture, approach, and curriculum. You can find our application in the Middle School Admissions section of the website: www.santafeschool.org

Contact Info:

Please contact **Elisa Boyles, Director of Admissions**: 505-438-8585
email: admissions@santafeschool.org



SCAN or Click on the QR codes:



OPEN HOUSE



SCHOOL TOUR



APPLICATION



SHADOW DAY



THE ACADEMY FOR TECHNOLOGY AND THE CLASSICS

ATC is an inclusive community of scholars who boldly inspire and empower each other to think critically, build imaginatively, and courageously co-create a just world.



ABOUT ATC

The Academy for Technology and the Classics (ATC) was founded in 2000 to provide a classical and technology-based approach to education in a public school setting. ATC emphasizes honors, pre-advanced placement (AP), and AP classes. We offer a college advisory program in which a student is assigned an advisor in 7th grade who works with that student through 12th grade. The advisor helps students to prepare for college and to find the college that best fits each student's skills, needs, and interests.

Twenty-six credits are required for high school graduation. Specific requirements include 4 years of science (biology, chemistry, physics, and elective science credit), 4 years of English (pre-AP in 9th and 10th grade and Advanced Placement in 11th and 12th grade), 4 years of math (a minimum of Algebra I, Geometry, Algebra II, Pre-Calculus or Financial Literacy), 3.5 years of social studies (New Mexico history, Advanced Placement World History, Advanced Placement U.S. History, and Advanced Placement U.S. Government), and 3 years of foreign language. Advanced Placement courses are offered in English, physics, biology, environmental science, calculus, statistics, psychology, world history, U.S. history, U.S. government, and studio art.



MISSION & VISION

ATC aims to integrate students with a variety of learning styles and personal strengths in order to foster communication, literacy, critical thinking, and the personal skills necessary for college success. The school's mission is to provide an academically charged environment while instilling the "classic" moral values of respect, integrity, responsibility, and honesty. ATC cultivates fearless learners.



CLUBS & ACTIVITIES

ATC offers its students a growing number of extracurricular student activities. These activities complement our academic curriculum and help students explore additional interests, work within teams, build character, develop leadership skills, and foster community. Participation in student clubs is also a means of building relationships and contributing to a connected school culture.

Clubs include Amnesty International, Beading, Chess, Coloring, Dance, D&D, GSA, Hackysack, Model UN, Mountain Club, Music Appreciation, NHS, Natural Helpers, STEM, eSports, Tai Chi, Theatre, and Yarn.

WHY ATC?

ATC ranks in the top 2% of all high schools in the nation and ranks third in the State of New Mexico. US News gives ATC a scorecard rating of 98.47 and was awarded Best High Schools again in 2023.

We maintain at least a 92% graduation rate. Approximately 89% of our graduates attend a four-year university and about 5% attend a two-year college.

Student SAT scores 5 year average is 1076 and PSAT 5 year average is 1033. 100% of our students will take an AP exam with more than three quarters of students of passing at least one.



LOTTERY & ADMISSION

In-Person Open House:

October 18, 2023 at 5:30 PM

Lottery Application Deadline:

February 19, 2024 at 11:59 PM

Lottery Announcement:

February 22, 2024 at 4:30 PM



505-473-4282

admissions@atcschool.org

74 A Van Nu Po Rd, Santa Fe, NM 87508



JOURNEY MONTESSORI

— S C H O O L —



JOURNEY MIDDLE SCHOOL

The Journey Middle School program is designed specifically for the adolescent learner ages 12-14. Students explore concepts of constructing themselves while developing their social/emotional/cognitive intelligence and communication skills. They participate in inquiry-based learning projects that foster initiative and allow for voice and choice. Our students will move beyond the classroom walls to connect with nature and their community.

Through developmentally appropriate experiences, that tie together the core academic subjects with real-world experiences and outdoor exploration, students have a truly unique and authentic middle school experience. At Journey, we are preparing students for not only the rigors of secondary education, but also to face the challenges of our planet, all within the context of where they are in adolescence.

Journey Middle School students will...

- ❖ read texts in a variety of formats
- ❖ research in local libraries, consult primary and secondary sources, interview experts and community members, and field test classroom work
- ❖ write for a variety of purposes
- ❖ present their learning, report findings, debate and discuss
- ❖ develop their mathematical mind and problem-solving skills through real-world application of pre-algebra and algebra concepts
- ❖ investigate local and national government and history
- ❖ participate in field study and active research in environmental and physical sciences
- ❖ learn Spanish through direct interaction with native speakers and community involvement
- ❖ be environmental stewards, practicing service to their community and the environment
- ❖ be outdoors, actively connecting to nature daily



OPEN HOUSE • OCTOBER 21, 2023

Middle School • 1209 Unity Way • Santa Fe

JourneyMontessoriSchool.org

505•652•1986



JOURNEY MONTESSORI SCHOOL

Journey Montessori School is a unique educational experience in Santa Fe for children that combines an authentic Montessori classroom experience with extensive outdoor education. Our curriculum, based on the philosophy of Dr. Maria Montessori, combines collaborative, hands-on learning with student driven independent study. In addition to the regular classroom curriculum, students at Journey spend extensive time outdoors, exploring, experimenting, and learning in nature.

THE ADOLESCENT

Adolescence is a time of great change as children begin their metamorphosis into adulthood. Our Journey Middle School Program is carefully designed to meet the unique needs of these vulnerable, emerging adults. This program is perfect for motivated, active learners who enjoy getting out of the classroom and experiencing our world!



MANDELA INTERNATIONAL MAGNET SCHOOL

Randy Grillo, Principal
505.467.1901
randy.grillo@mandelainternationalschool.us

K.C. Dutcher, Counselor
505.467.1920
kc.dutcher@mandelainternationalschool.us

Lydia Hogan, Registrar/IB Data Manager
505.467.1914
lydia.hogan@mandelainternationalschool.us



A 7 – 12
IB World School
established 2014

General Information: Mandela International Magnet School is the only equal access, public International Baccalaureate (IB) school in Santa Fe. As a fully authorized IB school, we serve students in grades 7-10 with the Middle Years Programme (MYP), and grades 11-12 with the Diploma Programme (DP). As an IB World School, we fully embrace the tenets and mission of the IB: to develop inquiring, knowledgeable, and caring young people who help to create a better and more peaceful world through intercultural understanding and respect.

- 100% of our students are admitted through a randomized lottery
- Current Enrollment is 300 students in grades 7 through 12
- Class of 2023 has 28 students
- Teaching faculty: 33 total; 25%+ Nationally Board Certified, 50%+ Bilingual, average 20 years teaching experience
- Cumulatively our teachers have taught or trained in Paraguay, Japan, Guatemala, Spain, Mexico, Kenya, France, Morocco, Taiwan, Venezuela, Egypt, Thailand, India, Australia, and the British Virgin Islands, bringing Internationalism to our classrooms
- The student/faculty ratio is 11/1
- Over 20 clubs, teams, extracurricular activities and service-learning programs offered for participation

School Demographics:

- 2% American Indian/Alaskan Native
- 6% Asian
- 3% Black/African American
- 43% Hispanic/Latino
- 1% Native Hawaiian/Other Pacific Islander
- 33% White
- 12% Declined to Answer
- The above numbers include undocumented and first-generation students

Curriculum:

The International Baccalaureate Diploma Programme (DP) curriculum sets out the requirements for the study of the DP. The curriculum is made up of the DP core that aims to broaden students' educational experience and challenge them to apply their knowledge and skills., and six subject groups.

The six subject groups are:

- Studies in Language and Literature
- Language Acquisition (*Spanish & Mandarin*)
- Individuals and Societies (*20th Century Studies of the Americas*)
- Sciences (*Biology*)
- Mathematics
- Arts (*Visual Art, Music: Orchestra, Music: World Music, Theatre*)

Graduation Requirements: Per New Mexico Public Education Department guidelines, students must complete a minimum of 24 high school credits across the following disciplines: ELA, Math, Science, Social Studies, Physical Education and Health, Foreign Language or Career Readiness, and Electives. Additionally, Mandela graduates are required to complete IB-specific course content above and beyond state requirements. Finally, students must demonstrate minimum performance competencies on standardized graduation tests.

Content Area	MIMS Credits Needed	NM Credits Needed
English Language Arts	4.0	4.0
Math	4.0	4.0
Science	4.0	3.0
Social Studies	4.0	3.5
Physical Education	1.0	1.0
Health	0.5	0.5
Foreign Language/Career Readiness	4.0	1.0
Electives	Fine/Performing Arts= 4.0 Creativity, Activity & Service (CAS)=1.0 Extended Essay (EE)=0.5 Personal Project (PP)=0.5 Theory of Knowledge (TOK)=1.0	7.5
Total Credits	28.5 credits	24.5 credits

College Matriculation: Graduates of the first four Mandela classes have been accepted at the following colleges and universities (**bold indicates a college or university at which a Mandela graduate has matriculated**):

- o **American University**
- o Arizona State University
- o Baylor University
- o **Bowdoin College**
- o Butler University
- o **Carnegie Mellon University**
- o Case Western Reserve
- o Colgate University
- o Colorado College
- o Colorado School of Mines
- o **Colorado State University**
- o **Columbia College Chicago**
- o DePaul University
- o **DePauw University**
- o **Duke University**
- o **Fort Lewis College**
- o **Grinnell College**
- o **Iowa State University**
- o **Kenyon College**
- o Lake Forest College
- o Lawrence University
- o Lehigh University
- o **Lewis & Clark College**
- o Marist College
- o **Massachusetts College of Pharmacy**
- o Michigan State University
- o **Middlebury College**
- o **Montana State University**
- o **New Mexico Highlands University**
- o **New Mexico State University**
- o **New Mexico Tech**
- o **The New School**
- o Northeastern University
- o Northern Arizona University
- o **Northwestern University**
- o Pitzer College
- o **Portland State University**
- o **Purdue University**
- o **Quest University**
- o **Reed College**
- o **Rochester Institute of Technology**
- o San Diego State University
- o Sarah Lawrence College
- o **Smith College**
- o **Soka University of America**
- o Southwestern College
- o **St. John's College**
- o Texas A&M University
- o Trinity University
- o **Union College**
- o University of Arizona
- o **University of Colorado - Boulder**
- o University of Colorado - Colorado Springs
- o **University of Colorado - Denver**
- o University of Connecticut
- o **University of Denver**
- o University of Hawaii Manoa
- o University of Illinois - Chicago
- o University of Massachusetts
- o **University of Nevada - Las Vegas**
- o **University of New Mexico**
- o **University of Oregon**
- o **University of the Pacific**
- o University of Portland
- o University of Redlands
- o University of South Florida
- o **University of Texas - Dallas**
- o University of Wisconsin
- o Vassar College
- o Washington State University
- o **Western Washington University**
- o Whitman College
- o Whittier College
- o Worcester Polytechnic Institute

80% of graduates are attending 4-year institutions, and nearly 90% are attending 2-4 year institutions. The Class of 2023 comprises our fifth graduating class. **The table below shows the numbers of Mandela graduates who have earned the prestigious International Baccalaureate Diploma, those who have earned IB certificates demonstrating outstanding performance in specific areas, and those who have received the NM Seal of Bilingualism (English/Spanish or English/Mandarin Chinese).**

	Total Students	IB Diploma	IB Course Certificates	Bilingual Seal	Trilingual Seal
Class of 2022	16	11	5	7	-
Class of 2021	25	15	8	9	1
Class of 2020	25	10	12	11	1
Class of 2019	19	1	10	8	-



May Center Overview

May Center for Learning is a nonprofit 501(c)3 founded in 2011 by Santa Fe educators Amy Miller and Karen Lindeen. The organization's mission is to empower students with learning differences to succeed in school and in life. The first class, a summer school session with seven students, was offered in 2012. Since then, May Center has grown exponentially and now serves hundreds of students through its school, summer school, tutoring programs, evaluation center, and teacher training institute.

- **May School** serves exceptional students from preschool through 8th grade, specializing in those having learning differences such as dyslexia, ADHD, and language processing disorder. May School's student/teacher ratio is 6:1. Each student's program is individualized to meet his or her needs, and is taught by faculty who have completed extensive training and certification in multi-sensory language teaching, the "gold standard" for students with learning differences. May is located at St. John's Methodist Church, 1200 Old Pecos Trail.
- **LEAP Skills Tutoring** offers after school small group tutoring 3 days per week using the Orton-Gillingham approach Shelton School Sequential English Education instruction and other evidence based structured literacy curricula. The May Center also offers tutoring in writing skills and Executive Function coaching. LEAP Skills classes are open to all school aged children from kindergarten through high school, regardless of the school they attend. These classes are taught by learning specialists who have particular expertise working with students who learn differently.
- **May Evaluation Center** offers psycho-educational evaluations conducted by licensed diagnosticians, creating a comprehensive learning profile that will help determine the most appropriate types of instruction, interventions, and settings for student success. The assessments can be used in all private and public school settings to qualify students for 504 plans, IEPs, and other services and accommodations.
- **May Center Teacher Institute** are custom-designed for each participating school's faculty, based on the needs of their students. May Center Teacher Institute is the first program in New Mexico to be accredited by the International Dyslexia Association in partnership with Shelton School of Dallas to provide a nationally certified Dyslexia Specialist program. May Center Teacher Institute has launched a May Way (TM) model schools project working with the New Mexico Public Education department and districts statewide to implement the May Way model of literacy instruction in public schools.

For more information, please visit us online at maycenter.org, or by calling us at 505.780.5439.

Monte del Sol Charter School educates and inspires
Santa Fe's diverse population in grades 7 through 12,
by building strong relationships
and creatively engaging the local and global community.



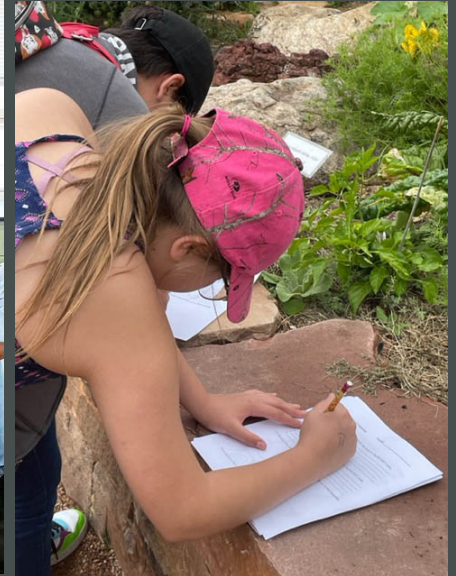
24

Years of Learning



380

Enrolled Students



24

Teachers

62%

of teachers hold
advanced degrees

A SMALL SCHOOL WHERE EVERY STUDENT IS KNOWN AND RESPECTED

Experiential Education
Outdoor Learning
Mentorship
AP + Honors Courses
Arts Integration

Global Literacy
International Trips
Athletics
Internship Opportunities
Community Service

Dual Credit in Sustainability + Computer Technologies + Culinary Arts
through our Sustainable College
and Career Readiness Program



Monte del Sol Charter School • 4157 Walking Rain Rd. • Santa Fe, NM 87507
www.montedelsolcharterschool.org • 505.982.5225 • info@montedelsol.org



SANTA FE Girls' SCHOOL

Dedicated to Middle School Girls



35%
of families
receive
financial aid

Admissions
Open House
October 15th 3 PM
RSVP:
santafegirlsschool.org



The Girls' School ADVANTAGE

BY THE NUMBERS



93%

of girls' school grads say they were offered **GREATER LEADERSHIP OPPORTUNITIES** than peers at coed schools, and 80% have held leadership positions since graduation.

A MAJORITY OF GIRLS' SCHOOL GRADS REPORT

★★★★ **HIGHER** ★★★★★
SELF-CONFIDENCE
OVER THEIR COED PEERS.



80%

of girls' school students report that most of their classes challenge them to **ACHIEVE THEIR FULL ACADEMIC POTENTIAL**, compared to 72% of girls at coed independent schools and 44% at coed public schools.

Students attending girls' schools experience **HIGHER LEVELS OF SUPPORT** from their classmates and teachers than do their peers at coed schools.



Girls' school grads are **6X MORE LIKELY** to consider majoring in STEM subjects, compared to girls who attend coed schools.

Science Technology Engineering Math



2/3 OF STUDENTS AT GIRLS' SCHOOLS EXPECT TO EARN A GRADUATE OR PROFESSIONAL DEGREE.



>80% OF GIRLS' SCHOOL GRADUATES CONSIDER THEIR ACADEMIC PERFORMANCE HIGHLY SUCCESSFUL.



Sources: Steeped in Learning: The Student Experience at All-Girls Schools; Women Graduates of Single-Sex and Coeducational High Schools: Differences in Their Characteristics and the Transition to College; and The Girls' School Experience: A Survey of Young Alumnae of Single-Sex Schools

Prep at a Glance (2023-2024 Academic Year)

Total Enrollment: 345 (grades 7-12)
 Students of Color: 37% of enrollment
 Average Class Size: 16
 Faculty to Student Ratio: 1:9
 Tuition: \$26,600
 Students Receiving Tuition Assistance 32%

Average Grant: \$15,804
 Faculty Members: 41
 Faculty Holding Advanced Degrees: 80%
 Academic Courses: 65
 Honors & AP Courses: 12
 Fine Art & Performing Art Classes: 24

Learn More:

Attend Admissions Open House – We will host our annual Admissions Open House on Friday, October 20, from 2-5pm. This event is an opportunity for prospective students and families to meet the Admissions team, participate in mini-classes taught by Prep faculty, and hear from current Prep students about their experience. Register through the Admissions Portal at sfprep.org.

Schedule a Visit Day – Prospective students can experience a full day in the life of Santa Fe Prep. Visitors will be paired with a current Prep student to attend classes and have lunch on campus. The Visit Day is a required component of the application and will include the Student Interview. Register after through the Admissions Portal at sfprep.org.



Application Requirements:

Instructions for each item can be found on the Admissions Portal:

- Student Statement**
- Parent Statement**
- Transcript (current year and 2 prior years)**
- English Teacher Recommendation**
- Math Teacher Recommendation**
- Visit Day/Interview**
- Admissions Assessment– Jan. 27; Feb. 1; Feb. 10, or Feb. 15**

Admission Application deadline: February 21, 2024
 Tuition Assistance Application deadline: January 19, 2024

Mary Little, Director of Admissions
 Direct: 505.795.7518 or mlittle@sfprep.org

Summar Aubrey, Associate Director of Admissions
 Direct: 505.795.7512 or saubrey@sfprep.org

Prep Students:

More than 20 schools feed into Santa Fe Prep's middle and upper school, and over \$1,700,000 in aid is awarded annually to 32% of Prep families, with an average grant of \$15,804. Prep's commitment to tuition assistance has made the school significantly more diverse and culturally layered. Outstanding academics amid a supportive and diverse learning environment has prepared Prep's recent graduates for successful futures at schools including **Barnard, Brown, Caltech, Claremont McKenna, Colorado College, Dartmouth, Middlebury, Northwestern, NYU, Oberlin, Pitzer, Princeton, Stanford, Tulane, UCLA, UChicago, UNM, USC, and Williams among others.**

"Prep has challenged me to push myself, both academically and personally. I have learned to problem-solve and analyze and communicate complex ideas. I've also gained confidence and self-understanding. I've grown so much because of everyone I have met at Prep, and I am grateful to be a part of this community."

Alex '23 - freshman at Vassar College



64% of college applications from the Class of 2023 were accepted. Of students receiving aid, \$33,968 was the average grant awarded per student/per year at the school each chose to attend. The Class of 2023 included 5 National Merit Finalists, 4 LANL Foundation Scholars, and 2 Davis New Mexico Scholars. The average SAT score was 1390, and the average ACT score was 26.

Core Curriculum:

Santa Fe Prep offers a college preparatory middle and high school education. We are dedicated to discussion-based learning, community service, and experiential education. Students are taught to be independent thinkers with well-honed intellectual skills, committed to excellence, and creativity. We teach the whole child.

Special Programs:

The Teen Action Program (TAP) exposes students to a wide range of community service opportunities, culminating in a self-guided year-long project. Prep's award-winning theater department produces one play and two musicals per year, in which students are not only actors, but also set designers and lighting technicians. Students can participate in fine arts classes from ceramics to life drawing to photography. Extracurricular activities such as Model UN, Speech and Debate, Student Council, and student publications are an integral part of a Prep education. Prep also has several middle school sports and 43 sports teams in the middle and upper schools. Many of our teams have won championships at both the district and state levels.





ST. MICHAEL'S HIGH SCHOOL

*Providing Catholic Lasallian education
for more than 160 years.*



Founded in 1859 by the Brothers of the Christian Schools, St. Michaels is a State of New Mexico and AdvancedED private school serving grades 7–12. The 25 acre campus is governed by the Board of Trustees in cooperation with the Christian Brothers of the District of San Francisco New Orleans.

OUR MISSION

St. Michael's High School, with a college preparatory curriculum, has as its mission to educate each student in the spirit of faith and academic excellence according to Roman Catholic principles of the Christian Brothers.



- 100%** College Acceptance Rate
- 15** Athletic Programs
- 14** Extracurricular Offerings
- 35%** of Student Body Receives Financial Aid
- 90%** of Financial Aid Applicants Receive Aid
- Average Financial Aid Award is **\$2,491**

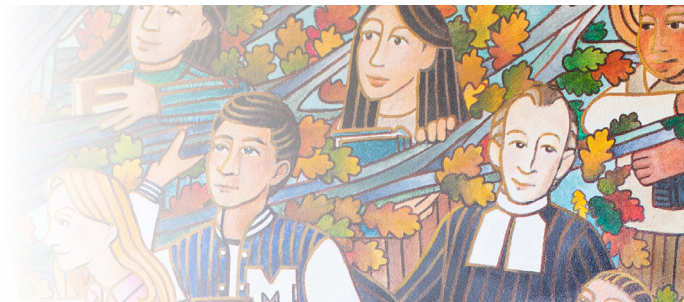


100 Siringo Road
Santa Fe, New Mexico 87505

505.983.7353
stmichaelsf.org



ST. MICHAEL'S HIGH SCHOOL



Admissions Timeline

SHADOW DAY: October – March (Please sign up online at www.stmichaelsf.org)

OPEN HOUSE: November 1st, 6–7:30pm

APPLY ONLINE: New Student applications for the 2024–2025 school year will open on **November 1, 2023** (Please apply online at www.stmichaelsf.org)

Special Note: January Admissions Application Deadline – **December 1, 2023**

ADMISSIONS CHECKLIST: Once the student application has been processed by SMHS an Application Checklist will be applied to all family OnBoard accounts.

PLACEMENT TEST AND INTERVIEW DATES: **February 10, 2023-** Early, **March 16, 2024-** General, **April 27, 2024-** Late

FINANCIAL AID: Financial Aid Application Opens **January 1, 2024**, Financial Aid Application Closes **April 30, 2024**

ACCEPTANCE: **March 4, 2024** – Early, **April 1, 2024** – General, **May 6, 2024** – Late

EARLY BIRD REGISTRATION: New Student Deadline – **March 29, 2024**

FINANCIAL AID AWARDED: Financial Aid Award notifications will be sent **May 31, 2024**

GENERAL REGISTRATION DEADLINE: New Students – **May 3, 2024**

LATE REGISTRATION DEADLINE: New Students - **June 13, 2024**

Any new student that wishes to attend St. Michael's High School and has not registered by June 13, 2024 may be placed onto a wait list.

RETURNING STUDENTS

PLEASE NOTE *the following dates:*

EARLY BIRD RE-REGISTRATION: January 8- February 29, 2024

COURSE SELECTION BEGINS: March 4, 2024

Special Note: Returning students must be registered to be eligible for course selections.

GENERAL RE-REGISTRATION: March 1- April 25, 2024

LATE RE- REGISTRATION: April 26- June 13, 2024

Any returning students of St. Michaels High School who wishes to return and has not re registered by June 13, 2024 may be placed onto a wait list or may be subject to a withdrawal.



Fall

Winter

Spring



100 Siringo Road
Santa Fe, New Mexico 87505

505.983.7353
stmichaelsf.org



TURQUOISE TRAIL CHARTER SCHOOL

Turquoise Trail: A New Mexico Original

New Mexico's oldest charter school and one of the highest-achieving schools in the state, Turquoise Trail Charter School (TTCS) is as eccentric and diverse as the city of Santa Fe itself. Students and families come to TTCS from as far away as Rio Rancho and Las Vegas, from local tribes and pueblos, from artist communities in the mountains, and from all over Santa Fe. A New Mexico original, TTCS was voted "Best of Santa Fe (2021)" and named New Mexico "Spotlight" School and among the top 10% of schools in English Language acquisition in the state in 2019-20. A vibrant arts community brings style and character to the rigorous academic standards that our school is built upon.

WE ARE THE COYOTES AND ABOVE ALL, WE PROTECT THE PACK. AT TTCS, EVERY STUDENT IS KNOWN AND LOVED.



Our Mission

Turquoise Trail Charter School serves a diverse community of students and families in a safe and supportive environment fostering communication, collaboration, critical thinking, and creativity. Teaching and learning are research-based, challenging, data-driven, and relevant to unique student needs and interests.

Our Vision

Turquoise Trail Charter School aims to construct an innovative environment designed to support high achievement, strong engagement, student well-being, and an intentional fostering of community in order to become the academically highest performing Title I school in New Mexico.

13 & SAN MARCOS LOOP
SANTA FE, NM, 87508
WWW.TTCSCHOOL.ORG
505-986-4000





TURQUOISE TRAIL CHARTER SCHOOL

TTCS Is a Free Public School Open to Any Family in New Mexico

TTCS is a charter school. What does this mean? A few things....

1st: The students pay **NOTHING** to attend this school. The education here is not only excellent, it is **FREE!**

2nd: All New Mexico students are welcome. We have no zone limitations, we are our own district. Any student within the state of New Mexico can apply in our lottery.

For the first time in 25 years, the chances of getting into Turquoise Trail are going to be significantly higher. We are expanding! Adding classes in the elementary school and opening up the middle school. Now is your best chance ever to get in. After next year, the odds will go back to what they were before.

3rd: As a public charter school, TTCS receives operational funding from the government. Unfortunately, funding levels have dropped dramatically in recent years, creating significant obstacles to maintaining a high-quality learning environment for our students. You can help by making a recurring or one-time tax-deductible contribution to TTCS.



13 & SAN MARCOS LOOP
SANTA FE, NM, 87508
WWW.TTCSCHOOL.ORG
505-986-4000

